

09

# Current and force gauge

Welding Expert HANDY

Model

WEH-3000

SPOT



Monitech co.,ltd.  
[www.monitech.co.kr](http://www.monitech.co.kr)

## Main Features

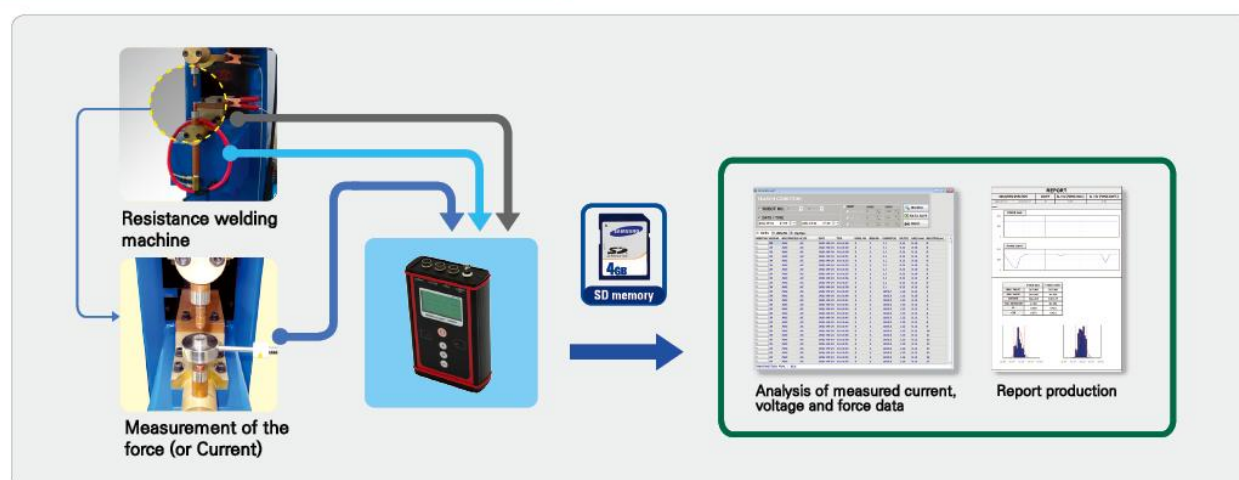
- Current, voltage and force of resistance welding can be measured in one equipment
- Palm-sized and rechargeable battery powered
- Measurement data stored in SD memory/exclusive Data viewer S/W included
- Inverter DC, AC, Condenser DC, etc. are measurable
- Multi-pulse current is measurable by each pulse



## Main Purposes

- Essential equipment for welding quality control when producing auto parts and electronic products
- Excellent performance when actual output of welding equipment is regularly inspected and maintained.
- It can be used for internal calibration of welding machines

## Basic Configuration of handy



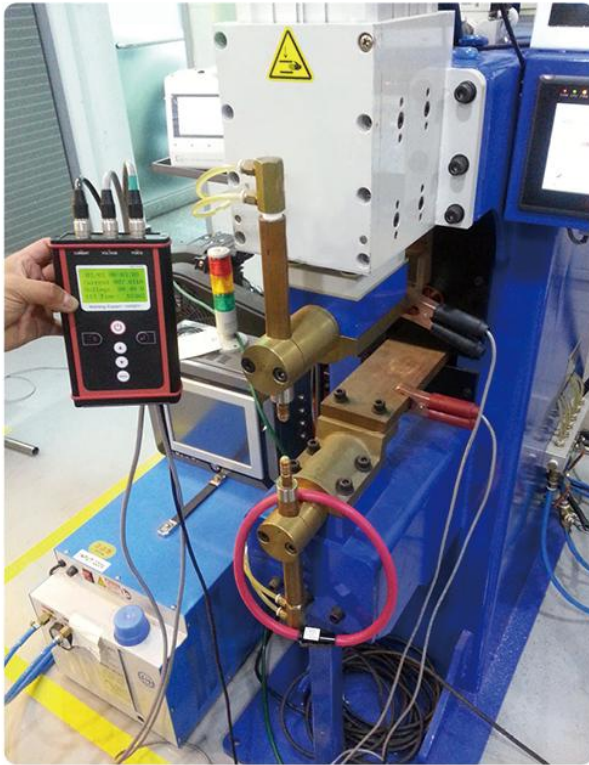
## Specification

Model Name	WEH-3000
Size	105(W) X 170(D) X 45(H)
Weight(kg)	0.8
Input (Rechargeable)	AC 100/220V, 50/60Hz (Free Voltage)
Measurement channel	Current, voltage, cycle time (weld time) and force
Current measuring range	AC: $\pm 200$ kA * DC: 1~200 kA
Voltage measuring range	AC: $\pm 10$ V * DC: 0~10V
Force measuring range	Max. 300N, 1kN, 2kN, 10kN, or 20kN (to be confirmed when ordering)
Data storage	SD Memory

## Force sensor types

Sensor type	Model name	Measuring range
Non-conductive		30~100kg
		1 Ton / 2 Ton
Insulated		1 Ton

## Application case

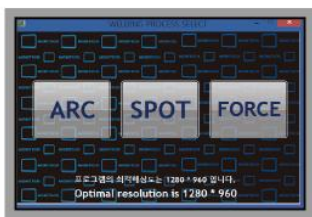


Handy application case



Insulated sensor application case

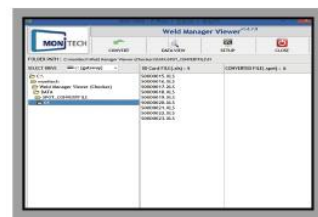
## S/W screens



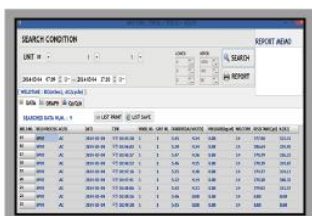
Main screen



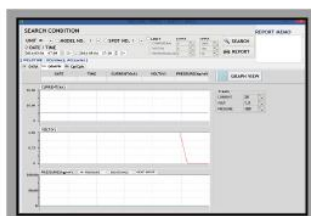
Main screen (SPOT/ARC)



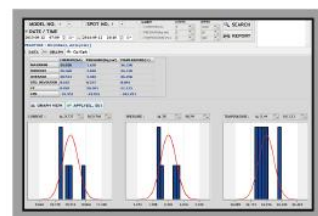
Data search screen



Data search screen - Data



Data search screen - graph



Data search screen - Cp/Cpk



## Real-time welding quality control and inspection solution

### Real-time welding monitoring system

- 01. Welding quality monitoring system (ARC/SPOT/TIG)
- 02. Intelligent welding monitoring system (NUT & BOLT Projection welding)
- 03. Welding calibration master equipment (ARC/SPOT/DUO)
- 04. MICRO SPOT welding monitoring system
- 05. High speed thermal imaging welding monitoring system
- 06. Ultrasonic welding monitoring system
- 07. Laser welding monitoring system

### Welding process measurement and equipment

- 08. Welding force measuring gauge (FORCE)
- 09. Current and force gauge (HANDY)
- 10. Advanced current and force gauge (HANDY PRO)
- 11. Measuring analyzing equipment for WPS/PQR (WPS)
- 12. Welding waveform analysis management equipment (MULTI)

### Inspection and integrated monitoring S/W

- 13. Integrated management and control system (MIS)
- 14. Inspection record computerized management system for the Initial, middle, and final products (IM)



**Monitech co.,ltd.**

ISO 9001 / ISO 14001 / INNOBIZ / Venture

#### Head office / R&D Center

92, Saebyeoksijang-ro, Sasang-gu, Busan,  
46987, KOREA  
Tel. +82-51-311-8691  
Fax. + 82-51-311-8692  
E-mail. monitech01@naver.com  
Homepage [www.monitech.co.kr](http://www.monitech.co.kr)  
Blog. <http://blog.naver.com/yuria85>

#### Seoul branch / R&D Center

304, Sanjeong building  
23, Gukhoe-daero 66-gil,  
Yeongdeungpo-gu, Seoul,  
07237, KOREA  
Tel. +82-2-780-8691  
Fax. +82-0303-0953-0954  
E-mail. monitech2@naver.com